

LIVE BY THE  
HILL SIDE

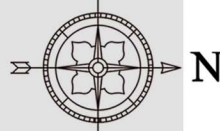
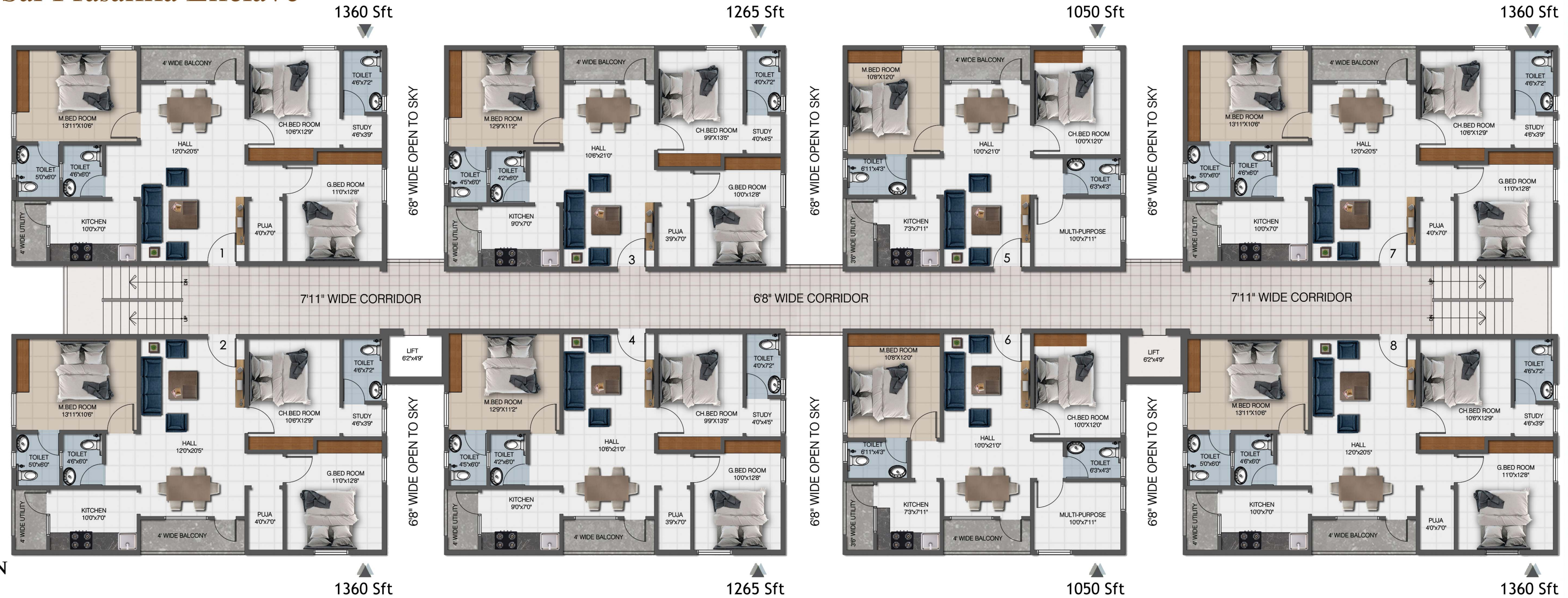
# Vaibhav's Sai Prasanna Enclave





# Vaibhav's Sai Prasanna Enclave

## BLOCK A & B TYPICAL FLOOR PLAN





## SPECIFICATIONS

### Structure :

RCC Framed structure designed by qualified structural engineer

### Brickwork:

6" brick external walls and 4½" for inter walls as per Structural Requirement.

### Plastering:

Smooth finish on cement mortar.

### Main Door:

Teak wood door and frame with lock Godrej/Dorset/Jainson or equivalent make

### Internal Doors :

Well seasoned country/Teak wood frames and water resistant flush doors/WPC/PVC or equivalent make

### Windows :

Wintech/Fenstar/Aparna/Kommerling/Oasis/Simta Asrtrix make UPVC Windows or Equivalent make.

### Electrical :

Concealed copper wiring make Finolex/Havells/Sudhakar wires/cables of ISI standard with adequate points to all rooms & modular switches of Legrand/Anchor/Salzer/Havells/Finolex or equivalent make.

### Flooring :

Krypton/Exaaro/Simpolo/AGL/Zealtop or equivalent make Vitrified, tiles 2' x 2' with 4" skirting for all rooms

### Painting :

Internal walls - smooth putty finish with two coats of emulsion paint over a coat of primer Asian/Berger/Dulux or equivalent make.

External walls - Textured/Putty finish with two coats of paint

### Toilets Plumbing:

Internal & External SWR pipes make Sudhakar/Supreme/Precious//Finolex or equivalent make

### Fittings:

Sanitary fittings of Hindware/Parry ware/RAK/Cera/Osaka/Ess Ess or equivalent make with concealed piping

### Fixtures:

Fixtures of Hindware / Crabtree / Jaguar / Parry ware / Cera / Ess Ess / Plumber or equivalent make.

### Flooring/Dadoing:

Delton/Flavor/RAK/Exaaro/Lycos Ceramics/Somani or equivalent make glazed ceramic tiles, dado upto 6"0 height.

### Kitchen :

Granite Kitchen platform with SS Sink Jindal/Pearl or equivalent make glazed ceramic tiles dado upto 2' height on the platform

### Water Supply :

Adequate water supply from suitable bore well

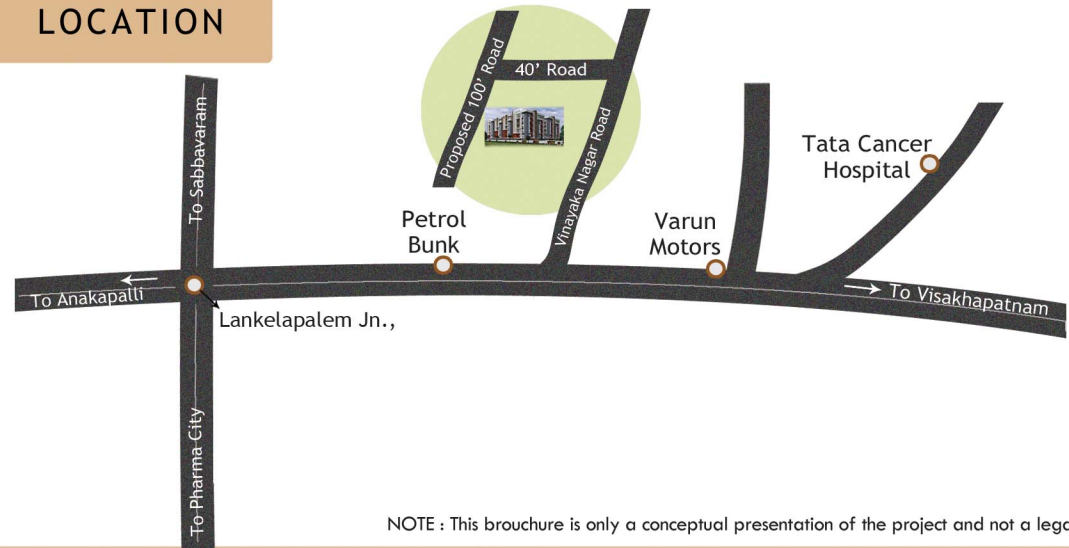
### Lift :

Make Johnson/Kone/Omega/Otis 6 persons capacity

### Generator :

Make Kirloskar/Cummins/Mahindra/Eicher/Escorts/Ashok Leyland make generator for common area lighting, lift and bore well.

## LOCATION



NOTE : This brochure is only a conceptual presentation of the project and not a legal offering.



Sri  
**Vaibhava Sai**

Homes Pvt Ltd.

Siri villa Apartment, Door No: 5-174/4,  
Flat No - GF4, Opp Sun Beach Campus,  
Yendada, Visakhapatnam, Email : svshp9@gmail.com

**Contact : 9912299555**

Structural Engineer

**Dr. T.Venkateswaralu**

Ph.D., (Struct) FIE, FICI, MISTE FIGS

Retd. Head of the Dept. Civil Engineering

Andhra University Visakhapatnam

Architects



**DE-AR**

DESIGNERS & ARCHITECTS

10-1-9/1/95 AAKRUTI APARTMENTS

TB ROAD, VISAKHAPATNAM 530005

(0891) 2552084, 9848182400, 9848221959

Architectural Renderings & Brochure Design by:

**X-LINE 3D**  
VIEWS

9959384104, 9550298244.